

ESMIL

www.esmil.us

COMPANY PROFILE

Esmil Corp.



**SLUDGE DEWATERING
AND WASTEWATER TREATMENT EQUIPMENT MANUFACTURER**

Company profile



Year of foundation
1995



Place of production for North American market
Akron OH, USA



Activity
wastewater treatment and sludge dewatering equipment manufacturing



Esmil Manufacturing Plant

Capabilities:



Advanced sludge dewatering technologies



Advanced manufacturing technologies



Equipment mechanical and electrical design



ISO-9001 Quality Management



We are the team of more than 130 people worldwide

Esmil Production:

01. RELIABILITY

High quality raw materials and components from the world's leading brands

02. DURABILITY

Advanced technology for working with stainless steel

03. ACCURACY

High-precision metal cutting and robotic welding



07. SCALE

Production management of 3 factories through a single ERP system

06. INNOVATION

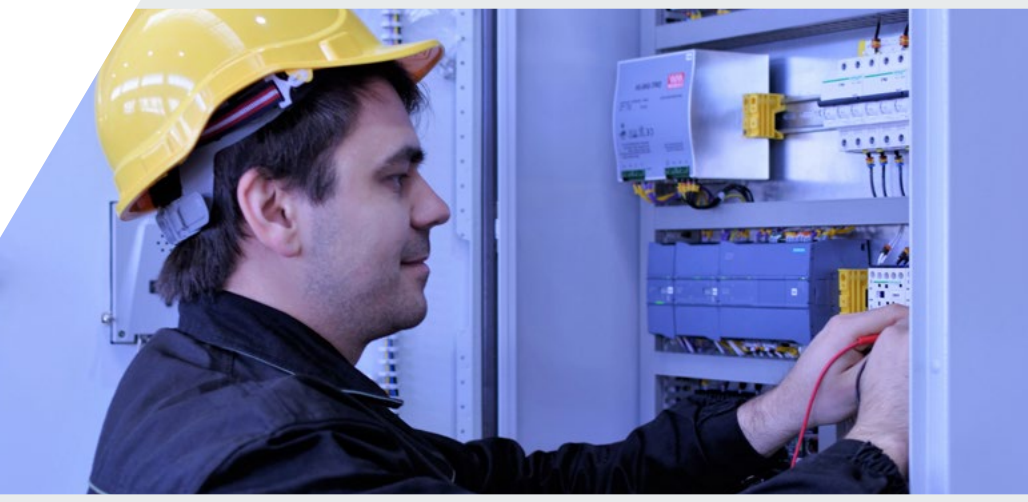
We produce equipment of our own design: from prototype to serial models

05. EXPERIENCE

Average work experience of employees - 9 years in the company

04. QUALITY

4 stages of product quality control





Sludge Dewatering

At Esmil Corp., we understand that sludge disposal is a critical aspect of any Water Reclamation Facility, demanding significant resources and advanced technology. With over 30 years of expertise in sludge dewatering, we offer a range of products designed to deliver efficient, reliable, and straightforward dewatering solutions.

EXPLORE OUR CUTTING-EDGE SLUDGE DEWATERING PRODUCTS:

Multi-Disk Screw Press MDQ: Ideal for various sludges, including primary and WAS sludge, mixed sludge, and DAF sludge.

Multi-Disk Sludge Thickener MDQ-T: Highly efficient sludge thickener for streamlined thickening processes.

Roller Press JD: Tailored for sediments containing abrasive inclusions, perfect for handling inorganic sediments.

Sludge Dewatering Systems: Comprehensive solutions featuring all necessary equipment – pumps, polymer make-down and supply systems, cake conveyors, and advanced control systems.

Containerized Dewatering Units: Swiftly address dewatering challenges while ensuring equipment mobility.

Multi-disk Screw Press MDQ series



KEY DEWATERING SOLUTIONS:

In our dewatering solutions, we leverage the best available and effective modern technologies to ensure superior performance. Explore our key dehydration solutions:

Separate Collection of Filtrate: Enhance efficiency with a dedicated system for the precise collection of filtrate.

Chemical Treatment Options: Choose between one- or two-stage chemical treatments, including flocculant or coagulant-flocculant, tailored to your specific needs.

Two-Stage Flocculation: Achieve optimal results with a two-stage flocculation process, incorporating fast and slow mixing for superior performance.

Filtrate Recycling: Contribute to sustainability by recycling filtrate for use in preparing polymer solutions, minimizing environmental impact.



JD Roller Press



Our services

PROCESS OPTIMIZATION



Esmil possesses research laboratories and a wide range of pilot and laboratory equipment, which is operated by highly qualified technologists and engineers and allows us to provide our company's customers with quality services of preliminary investigation and implement the most cost-effective and technologically efficient solutions.

PILOT AND TEST



We make your decision process easy. If you have any questions how our equipment works you can test it at your WWTP.

EQUIPMENT COMMISSIONING



We provide turnkey solutions and take responsibility from technology design to start-up and troubleshooting.

AFTER-SALES SERVICES



We offer you the best aftersales service on the market: by the customer's costs for services and 24/7 customers support.

Esmil strategy for conducting the process optimization

SITE ANALYSIS

Research of sources of wastewater/sediment formation, development of adequate methods of sampling and analysis

START-UP AND AFTER-SALES SERVICES

Control over installation, carrying out start-up and commissioning works; improvement of the operation of facilities; personnel training; monitoring, control and service



SELECTION AND TESTING OF THE SOLUTION

Carrying out laboratory and/or pilot researches of the selected technology, search of process optimal parameters fine tuning

HIGH-END ENGINEERING

Analysis of the received information, carrying out detailed calculations and improvement of the technological solution

Advantages of process optimization

The Esmil strategy of preliminary investigation developed and tested over the years allows for effective implementation of projects of any complexity applying specific technologies for the treatment of wastewater from different industries using the vast experience that we have gained during the construction of wastewater treatment plants at various enterprises.

One of the most important advantages of step-by-step project implementation is the introduction of non-standard technological solutions, which allows us to comply with all the requirements and requests of the customer to the treatment process due to the individual approach at each site. Besides, after a thorough verification of the effectiveness of the technology, it is possible to implement completely new and unique solutions, which may be an important competitive advantage for the customer.

We work together with the customer to develop a project from its beginning. Our solutions range from small project implementation through full scale turnkey operations. We have lease equipment and operation options, service options and can also offer monitoring and process improvement plans.



Containerized Solutions

ESMIL Group offers various containerized solutions for wastewater treatment and sludge dewatering:

ESMIL Module D – containerized sludge dewatering plant based on Multi-Disk Screw Press.

ESMIL Module F – containerized wastewater treatment plant based on DAF Unit.





Esmil Corp. is a part of ESMIL Group, a leading global manufacturer of equipment for wastewater treatment and provider of advanced reverse osmosis technologies.

The company has three modern plants in USA, Poland and Ukraine and it's equipment operates in more than 37 countries worldwide.

ESMIL equipment operates in more than 37 countries worldwide



ESMIL CORP.

www.esmil.us
(646) 286-5512

info@esmil.us
3939 Mogadore Industrial Parkway, Mogadore, OH 44260